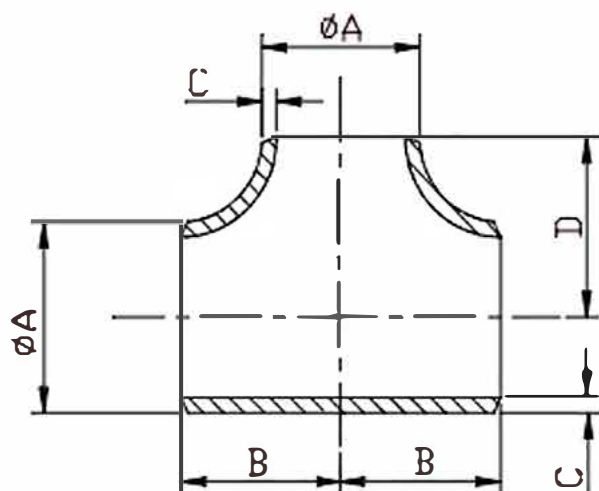


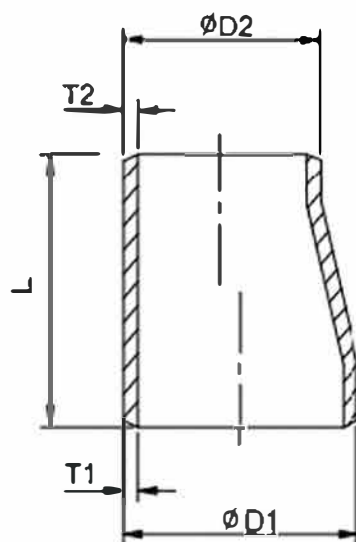
# Tee Igual ANSI B16.9



| DN     | A      | B/D    | C       |          |          |          |
|--------|--------|--------|---------|----------|----------|----------|
|        |        |        | SCH 5S. | SCH 10S. | SCH 40S. | SCH 80S. |
| 1/2"   | 21.30  | 25.40  | 1.65    | 2.11     | 2.77     | 3.73     |
| 3/4"   | 26.70  | 28.40  | 1.65    | 2.11     | 2.87     | 3.91     |
| 1"     | 33.40  | 38.10  | 1.65    | 2.77     | 3.38     | 4.55     |
| 1.1/4" | 42.20  | 47.80  | 1.65    | 2.77     | 3.56     | 4.85     |
| 1.1/2" | 48.30  | 57.20  | 1.65    | 2.77     | 3.68     | 5.08     |
| 2"     | 60.30  | 63.50  | 1.65    | 2.77     | 3.91     | 5.54     |
| 2.1/2" | 73.00  | 76.20  | 2.11    | 3.05     | 4.16     | 7.01     |
| 3"     | 88.90  | 85.90  | 2.11    | 3.05     | 5.49     | 7.62     |
| 4"     | 114.30 | 104.60 | 2.11    | 3.05     | 6.02     | 8.56     |
| 5"     | 141.30 | 124.00 | 2.77    | 3.40     | 6.55     | 9.53     |
| 6"     | 168.30 | 142.70 | 2.77    | 3.40     | 7.11     | 10.97    |
| 8"     | 219.10 | 177.80 | 2.77    | 3.76     | 8.18     | 12.70    |
| 10"    | 273.10 | 215.90 | 3.40    | 4.19     | 9.27     | 12.70    |
| 12"    | 323.90 | 254.00 | 3.96    | 4.57     | 9.53     | 12.70    |
| 14"    | 355.60 | 279.40 | 3.96    | 4.78     |          |          |
| 16"    | 406.40 | 304.80 | 4.20    | 4.78     |          |          |
| 18"    | 457.20 | 342.90 | 4.20    | 4.78     |          |          |
| 20"    | 508.00 | 381.00 | 4.78    | 5.54     |          |          |
| 22"    | 558.80 | 419.10 | 4.78    | 6.35     |          |          |
| 24"    | 609.60 | 431.80 | 5.54    | 6.35     |          |          |

Dimensões em mm.

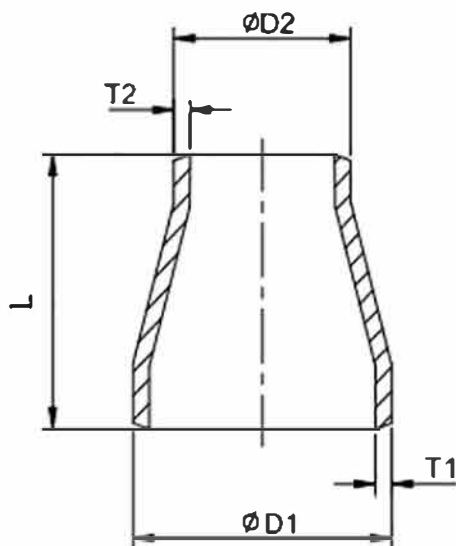
# Redução Excêntrica ANSI B16.9



| DN              | D1     | D2     | L      | T' x T'     | T' x T'     | T' x T'     | T' x T'       |
|-----------------|--------|--------|--------|-------------|-------------|-------------|---------------|
|                 |        |        |        | SCH 5S.     | SCH 10S.    | SCH 40S.    | SCH 80S.      |
| 3/4" x 1/2"     | 26.70  | 21.30  | 38.10  | 1.65 x 1.65 | 2.11 x 2.11 | 2.77 x 2.87 | 3.91 x 3.73   |
| 1" x 3/4"       | 33.40  | 26.70  | 50.80  | 1.65 x 1.65 | 2.77 x 2.11 | 3.38 x 2.87 | 4.55 x 3.91   |
| 1" x 1/2"       | 33.40  | 21.30  | 50.80  | 1.65 x 1.65 | 2.77 x 2.11 | 3.38 x 2.77 | 4.55 x 3.73   |
| 1.1/4" x 1"     | 42.20  | 33.40  | 50.80  | 1.65 x 1.65 | 2.77 x 2.77 | 3.56 x 3.38 | 4.85 x 4.55   |
| 1.1/4" x 3/4"   | 42.20  | 26.70  | 50.80  | 1.65 x 1.65 | 2.77 x 2.11 | 3.56 x 2.87 | 4.85 x 3.91   |
| 1.1/4" x 1/2"   | 42.20  | 21.30  | 50.80  | 1.65 x 1.65 | 2.77 x 2.11 | 3.56 x 2.77 | 4.85 x 3.73   |
| 1.1/2" x 1.1/4" | 48.30  | 42.20  | 63.50  | 1.65 x 1.65 | 2.77 x 2.77 | 3.68 x 3.56 | 5.08 x 4.85   |
| 1.1/2" x 1"     | 48.30  | 33.40  | 63.50  | 1.65 x 1.65 | 2.77 x 2.77 | 3.68 x 3.38 | 5.08 x 4.55   |
| 1.1/2" x 3/4"   | 48.30  | 26.70  | 63.50  | 1.65 x 1.65 | 2.77 x 2.11 | 3.68 x 2.87 | 5.08 x 3.91   |
| 1.1/2" x 1/2"   | 48.30  | 21.30  | 63.50  | 1.65 x 1.65 | 2.77 x 2.11 | 3.68 x 2.77 | 5.08 x 3.73   |
| 2" x 1.1/2"     | 60.30  | 48.30  | 76.20  | 1.65 x 1.65 | 2.77 x 2.77 | 3.91 x 3.68 | 5.54 x 5.08   |
| 2" x 1.1/4"     | 60.30  | 42.20  | 76.20  | 1.65 x 1.65 | 2.77 x 2.77 | 3.91 x 3.56 | 5.54 x 4.85   |
| 2" x 1"         | 60.30  | 33.40  | 76.20  | 1.65 x 1.65 | 2.77 x 2.77 | 3.91 x 3.38 | 5.54 x 4.55   |
| 2.1/2" x 2"     | 73.00  | 60.30  | 88.90  | 2.11 x 2.11 | 3.05 x 2.77 | 4.16 x 3.91 | 7.01 x 5.54   |
| 2.1/2" x 1.1/2" | 73.00  | 48.30  | 88.90  | 2.11 x 2.11 | 3.05 x 2.77 | 4.16 x 3.68 | 7.01 x 5.08   |
| 2.1/2" x 1.1/4" | 73.00  | 42.20  | 88.90  | 2.11 x 2.11 | 3.05 x 2.77 | 4.16 x 3.56 | 7.01 x 4.85   |
| 3" x 2.1/2"     | 88.90  | 73.00  | 88.90  | 2.11 x 2.11 | 3.05 x 3.05 | 5.49 x 4.16 | 7.62 x 7.01   |
| 3" x 2"         | 88.90  | 60.30  | 88.90  | 2.11 x 2.11 | 3.05 x 2.77 | 5.49 x 3.91 | 7.62 x 5.54   |
| 3" x 1.1/2"     | 88.90  | 48.30  | 88.90  | 2.11 x 2.11 | 3.05 x 2.77 | 5.49 x 3.68 | 7.62 x 5.08   |
| 4" x 3"         | 114.3  | 88.90  | 101.60 | 2.11 x 2.11 | 3.05 x 3.05 | 6.02 x 5.49 | 8.56 x 7.62   |
| 4" x 2.1/2"     | 114.30 | 73.00  | 101.60 | 2.11 x 2.11 | 3.05 x 3.05 | 6.02 x 4.16 | 8.56 x 7.01   |
| 4" x 2"         | 114.30 | 60.30  | 101.60 | 2.11 x 1.65 | 3.05 x 2.77 | 6.02 x 3.91 | 8.56 x 5.54   |
| 5" x 4"         | 141.30 | 114.3  | 127.00 | 2.77 x 2.11 | 3.40 x 3.05 | 6.55 x 6.02 | 9.53 x 8.56   |
| 5" x 3"         | 141.30 | 88.90  | 127.00 | 2.77 x 2.11 | 3.40 x 3.05 | 6.55 x 5.49 | 9.53 x 7.62   |
| 5" x 2.1/2"     | 141.30 | 73.00  | 127.00 | 2.77 x 2.11 | 3.40 x 3.05 | 6.55 x 4.16 | 9.53 x 7.01   |
| 6" x 5"         | 168.30 | 141.30 | 139.70 | 2.77 x 2.77 | 3.40 x 3.40 | 7.11 x 6.55 | 10.97 x 9.53  |
| 6" x 4"         | 168.30 | 114.30 | 139.70 | 2.77 x 2.11 | 3.40 x 3.05 | 7.11 x 6.02 | 10.97 x 8.56  |
| 6" x 3"         | 168.30 | 88.90  | 139.70 | 2.77 x 2.11 | 3.40 x 3.05 | 7.11 x 5.49 | 10.97 x 7.62  |
| 8" x 6"         | 219.10 | 168.30 | 152.40 | 2.77 x 2.77 | 3.76 x 3.40 | 8.18 x 7.11 | 12.70 x 10.97 |
| 8" x 5"         | 219.10 | 141.30 | 152.40 | 2.77 x 2.77 | 3.76 x 3.40 | 8.18 x 6.55 | 12.70 x 9.53  |
| 8" x 4"         | 219.10 | 114.30 | 152.40 | 2.77 x 2.11 | 3.76 x 3.05 | 8.18 x 6.02 | 12.70 x 8.56  |
| 10" x 8"        | 273.10 | 219.10 | 177.80 | 3.40 x 2.77 | 4.19 x 3.76 | 9.27 x 8.18 | 12.70 x 12.70 |
| 10" x 6"        | 273.10 | 168.30 | 177.80 | 3.40 x 2.77 | 4.19 x 3.40 | 9.27 x 7.11 | 12.70 x 10.97 |
| 10" x 5"        | 273.10 | 141.30 | 177.80 | 3.40 x 2.77 | 4.19 x 3.40 | 9.27 x 6.55 | 12.70 x 9.53  |
| 12" x 10"       | 323.90 | 273.10 | 230.20 | 3.96 x 3.40 | 4.57 x 4.19 | 9.53 x 9.27 | 12.70 x 12.70 |
| 12" x 8"        | 323.90 | 219.10 | 230.20 | 3.96 x 2.77 | 4.57 x 3.76 | 9.53 x 8.18 | 12.70 x 12.70 |
| 12" x 6"        | 323.90 | 168.30 | 230.20 | 3.96 x 2.77 | 4.57 x 3.40 | 9.53 x 7.11 | 12.70 x 10.97 |

Dimensões em mm.

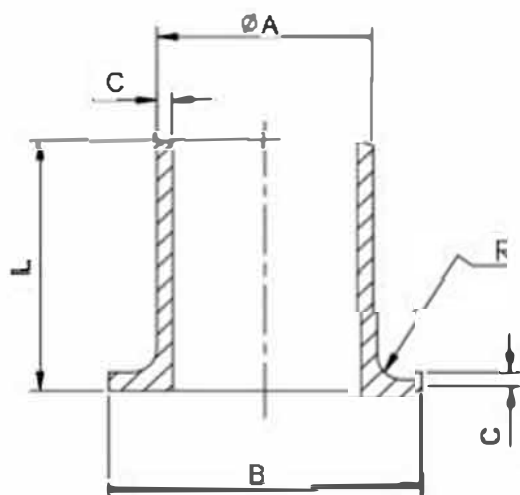
# Redução Concêntrica ANSI B16.9



| DN              | D1     | D2     | L      | T' x T'     | T' x T'     | T' x T'     | T' x T'       |
|-----------------|--------|--------|--------|-------------|-------------|-------------|---------------|
|                 |        |        |        | SCH 5S.     | SCH 10S.    | SCH 40S.    | SCH 80S.      |
| 3/4" x 1/2"     | 26.70  | 21.30  | 38.10  | 1.65 x 1.65 | 2.11 x 2.11 | 2.77 x 2.87 | 3.91 x 3.73   |
| 1" x 3/4"       | 33.40  | 26.70  | 50.80  | 1.65 x 1.65 | 2.77 x 2.11 | 3.38 x 2.87 | 4.55 x 3.91   |
| 1" x 1/2"       | 33.40  | 21.30  | 50.80  | 1.65 x 1.65 | 2.77 x 2.11 | 3.38 x 2.77 | 4.55 x 3.73   |
| 1.1/4" x 1"     | 42.20  | 33.40  | 50.80  | 1.65 x 1.65 | 2.77 x 2.77 | 3.56 x 3.38 | 4.85 x 4.55   |
| 1.1/4" x 3/4"   | 42.20  | 26.70  | 50.60  | 1.65 x 1.65 | 2.77 x 2.11 | 3.56 x 2.87 | 4.85 x 3.91   |
| 1.1/4" x 1/2"   | 42.20  | 21.30  | 50.80  | 1.65 x 1.65 | 2.77 x 2.11 | 3.56 x 2.77 | 4.85 x 3.73   |
| 1.1/2" x 1.1/4" | 48.30  | 42.20  | 63.50  | 1.65 x 1.65 | 2.77 x 2.77 | 3.68 x 3.56 | 5.08 x 4.85   |
| 1.1/2" x 1"     | 48.30  | 33.40  | 63.50  | 1.65 x 1.65 | 2.77 x 2.77 | 3.68 x 3.38 | 5.08 x 4.55   |
| 1.1/2" x 3/4"   | 48.30  | 26.70  | 63.50  | 1.65 x 1.65 | 2.77 x 2.11 | 3.68 x 2.87 | 5.08 x 3.91   |
| 1.1/2" x 1/2"   | 48.30  | 21.30  | 63.50  | 1.65 x 1.65 | 2.77 x 2.11 | 3.68 x 2.77 | 5.08 x 3.73   |
| 2" x 1.1/2"     | 60.30  | 48.30  | 76.20  | 1.65 x 1.65 | 2.77 x 2.77 | 3.91 x 3.68 | 5.54 x 5.08   |
| 2" x 1.1/4"     | 60.30  | 42.20  | 76.20  | 1.65 x 1.65 | 2.77 x 2.77 | 3.91 x 3.56 | 5.54 x 4.85   |
| 2" x 1"         | 60.30  | 33.40  | 76.20  | 1.65 x 1.65 | 2.77 x 2.77 | 3.91 x 3.38 | 5.54 x 4.55   |
| 2.1/2" x 2"     | 73.00  | 60.30  | 88.90  | 2.11 x 2.11 | 3.05 x 2.77 | 4.16 x 3.91 | 7.01 x 5.54   |
| 2.1/2" x 1.1/2" | 73.00  | 48.30  | 88.90  | 2.11 x 2.11 | 3.05 x 2.77 | 4.16 x 3.68 | 7.01 x 5.08   |
| 2.1/2" x 1.1/4" | 73.00  | 42.20  | 68.90  | 2.11 x 2.11 | 3.05 x 2.77 | 4.16 x 3.56 | 7.01 x 4.85   |
| 3" x 2.1/2"     | 88.90  | 73.00  | 68.90  | 2.11 x 2.11 | 3.05 x 3.05 | 5.49 x 4.16 | 7.62 x 7.01   |
| 3" x 2"         | 88.90  | 60.30  | 68.90  | 2.11 x 2.11 | 3.05 x 2.77 | 5.49 x 3.91 | 7.62 x 5.54   |
| 3" x 1.1/2"     | 88.90  | 48.30  | 68.90  | 2.11 x 2.11 | 3.05 x 2.77 | 5.49 x 3.68 | 7.62 x 5.08   |
| 4" x 3"         | 114.3  | 88.90  | 101.60 | 2.11 x 2.11 | 3.05 x 3.05 | 6.02 x 5.49 | 8.56 x 7.62   |
| 4" x 2.1/2"     | 114.30 | 73.00  | 101.60 | 2.11 x 2.11 | 3.05 x 3.05 | 6.02 x 4.16 | 8.56 x 7.01   |
| 4" x 2"         | 114.30 | 60.30  | 101.60 | 2.11 x 1.65 | 3.05 x 2.77 | 6.02 x 3.91 | 8.56 x 5.54   |
| 5" x 4"         | 141.30 | 114.3  | 127.00 | 2.77 x 2.11 | 3.40 x 3.05 | 6.55 x 6.02 | 9.53 x 8.56   |
| 5" x 3"         | 141.30 | 88.90  | 127.00 | 2.77 x 2.11 | 3.40 x 3.05 | 6.55 x 5.49 | 9.53 x 7.62   |
| 5" x 2.1/2"     | 141.30 | 73.00  | 127.00 | 2.77 x 2.11 | 3.40 x 3.05 | 6.55 x 4.16 | 9.53 x 7.01   |
| 6" x 5"         | 168.30 | 141.30 | 139.70 | 2.77 x 2.77 | 3.40 x 3.40 | 7.11 x 6.55 | 10.97 x 9.53  |
| 6" x 4"         | 168.30 | 114.30 | 139.70 | 2.77 x 2.11 | 3.40 x 3.05 | 7.11 x 6.02 | 10.97 x 8.56  |
| 6" x 3"         | 168.30 | 88.90  | 139.70 | 2.77 x 2.11 | 3.40 x 3.05 | 7.11 x 5.49 | 10.97 x 7.62  |
| 8" x 6"         | 219.10 | 168.30 | 152.40 | 2.77 x 2.77 | 3.76 x 3.40 | 8.18 x 7.11 | 12.70 x 10.97 |
| 8" x 5"         | 219.10 | 141.30 | 152.40 | 2.77 x 2.77 | 3.76 x 3.40 | 8.18 x 6.55 | 12.70 x 9.53  |
| 8" x 4"         | 219.10 | 114.30 | 152.40 | 2.77 x 2.11 | 3.76 x 3.05 | 8.18 x 6.02 | 12.70 x 8.56  |
| 10" x 8"        | 273.10 | 219.10 | 177.80 | 3.40 x 2.77 | 4.19 x 3.76 | 9.27 x 8.18 | 12.70 x 12.70 |
| 10" x 6"        | 273.10 | 168.30 | 177.80 | 3.40 x 2.77 | 4.19 x 3.40 | 9.27 x 7.11 | 12.70 x 10.97 |
| 10" x 5"        | 273.10 | 141.30 | 177.80 | 3.40 x 2.77 | 4.19 x 3.40 | 9.27 x 6.55 | 12.70 x 9.53  |
| 12" x 10"       | 323.90 | 273.10 | 230.20 | 3.96 x 3.40 | 4.57 x 4.19 | 9.53 x 9.27 | 12.70 x 12.70 |
| 12" x 8"        | 323.90 | 219.10 | 230.20 | 3.96 x 2.77 | 4.57 x 3.76 | 9.53 x 8.18 | 12.70 x 12.70 |
| 12" x 6"        | 323.90 | 168.30 | 230.20 | 3.96 x 2.77 | 4.57 x 3.40 | 9.53 x 7.11 | 12.70 x 10.97 |

Dimensões em mm.

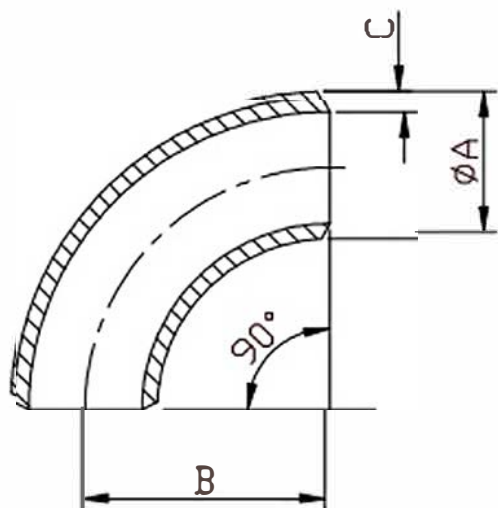
# Pestana Longa MSS SP-43 TIPO A



| DN     | A      | B      | L      | R    | C       |          |          |          |
|--------|--------|--------|--------|------|---------|----------|----------|----------|
|        |        |        |        |      | SCH 5S. | SCH 10S. | SCH 40S. | SCH 80S. |
| 1/2"   | 21.30  | 35.00  | 50.80  | 3.0  | 1.65    | 2.11     | 2.77     | 3.73     |
| 3/4"   | 26.70  | 42.90  | 50.80  | 3.0  | 1.65    | 2.11     | 2.87     | 3.91     |
| 1"     | 33.40  | 50.80  | 50.80  | 3.0  | 1.65    | 2.77     | 3.38     | 4.55     |
| 1.1/4" | 42.20  | 63.50  | 50.80  | 4.8  | 1.65    | 2.77     | 3.56     | 4.85     |
| 1.1/2" | 48.30  | 73.20  | 50.80  | 6.4  | 1.65    | 2.77     | 3.68     | 5.08     |
| 2"     | 60.30  | 91.90  | 63.50  | 7.9  | 1.65    | 2.77     | 3.91     | 5.54     |
| 2.1/2" | 73.00  | 104.60 | 63.50  | 7.9  | 2.11    | 3.05     | 4.16     | 7.01     |
| 3"     | 88.90  | 127.00 | 63.50  | 9.6  | 2.11    | 3.05     | 5.49     | 7.62     |
| 4"     | 114.30 | 157.20 | 76.20  | 11.2 | 2.11    | 3.05     | 6.02     | 8.56     |
| 5"     | 141.30 | 185.70 | 76.20  | 11.2 | 2.77    | 3.40     | 6.55     | 9.53     |
| 6"     | 168.30 | 215.90 | 88.90  | 12.7 | 2.77    | 3.40     | 7.11     | 10.97    |
| 8"     | 219.10 | 269.70 | 101.60 | 12.7 | 2.77    | 3.76     | 8.18     | 12.70    |
| 10"    | 273.10 | 323.90 | 127.00 | 12.7 | 3.40    | 4.19     | 9.27     | 12.70    |
| 12"    | 323.90 | 381.00 | 152.40 | 12.7 | 3.96    | 4.57     | 9.53     | 12.70    |
| 14"    | 355.60 | 412.80 | 152.40 | 12.7 | 3.96    | 4.78     |          |          |
| 16"    | 406.40 | 469.90 | 152.40 | 12.7 | 4.20    | 4.78     |          |          |
| 18"    | 457.20 | 533.40 | 152.40 | 12.7 | 4.20    | 4.78     |          |          |
| 20"    | 508.00 | 584.20 | 152.40 | 12.7 | 4.78    | 5.54     |          |          |
| 22"    | 558.80 | 641.40 | -      | 12.7 | 4.78    | 6.35     |          |          |
| 24"    | 609.60 | 692.20 | 152.40 | 12.7 | 5.54    | 6.35     |          |          |

Dimensões em mm.

# Curva 90° Raio Longo ANSI B16.9

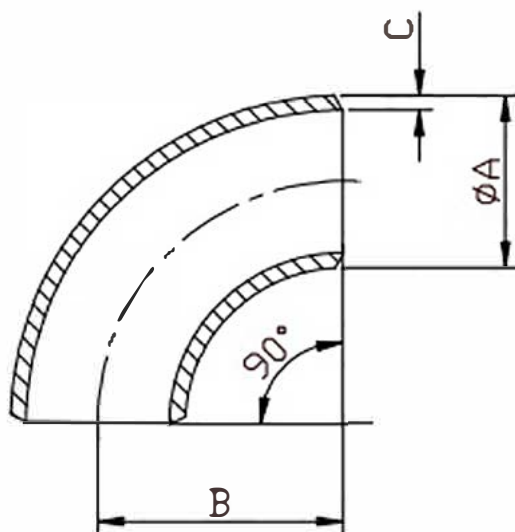


| DN     | A      | B      | C       |          |          |          |
|--------|--------|--------|---------|----------|----------|----------|
|        |        |        | SCH 5S. | SCH 10S. | SCH 40S. | SCH 80S. |
| 1/2"   | 21.30  | 38.10  | 1.65    | 2.11     | 2.77     | 3.73     |
| 3/4"   | 26.70  | 38.10  | 1.65    | 2.11     | 2.87     | 3.91     |
| 1"     | 33.40  | 38.10  | 1.65    | 2.77     | 3.38     | 4.55     |
| 1.1/4" | 42.20  | 47.80  | 1.65    | 2.77     | 3.56     | 4.85     |
| 1.1/2" | 48.30  | 57.20  | 1.65    | 2.77     | 3.68     | 5.08     |
| 2"     | 60.30  | 76.20  | 1.65    | 2.77     | 3.91     | 5.54     |
| 2.1/2" | 73.00  | 95.30  | 2.11    | 3.05     | 4.16     | 7.01     |
| 3"     | 88.90  | 114.30 | 2.11    | 3.05     | 5.49     | 7.62     |
| 4"     | 114.30 | 152.40 | 2.11    | 3.05     | 6.02     | 8.56     |
| 5"     | 141.30 | 190.50 | 2.77    | 3.40     | 6.55     | 9.53     |
| 6"     | 168.30 | 228.60 | 2.77    | 3.40     | 7.11     | 10.97    |
| 8"     | 219.10 | 304.80 | 2.77    | 3.76     | 8.18     | 12.70    |
| 10"    | 273.10 | 318.00 | 3.40    | 4.19     | 9.27     | 12.70    |
| 12"    | 323.90 | 457.20 | 3.96    | 4.57     | 9.53     | 12.70    |
| 14"    | 355.60 | 533.40 | 3.96    | 4.78     |          |          |
| 16"    | 406.40 | 609.60 | 4.20    | 4.78     |          |          |
| 18"    | 457.20 | 685.80 | 4.20    | 4.78     |          |          |
| 20"    | 508.00 | 762.00 | 4.78    | 5.54     |          |          |
| 22"    | 558.80 | 838.20 | 4.78    | 6.35     |          |          |
| 24"    | 609.60 | 914.40 | 5.54    | 6.35     |          |          |

Dimensões em mm.



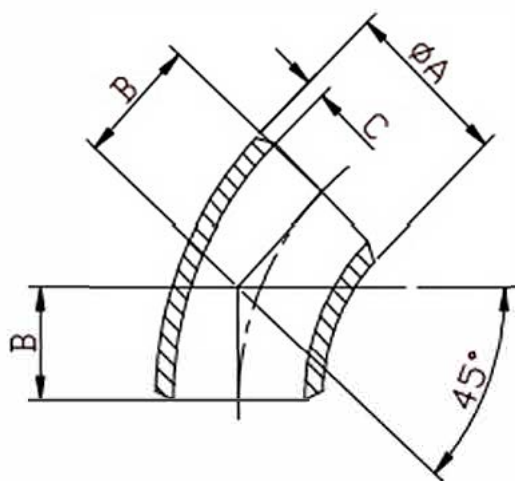
# Curva 90° Raio Curto ANSI B16.9



| DN     | A      | B      | C       |          |          |          |
|--------|--------|--------|---------|----------|----------|----------|
|        |        |        | SCH 5S. | SCH 10S. | SCH 40S. | SCH 80S. |
| 1"     | 33.40  | 25.40  | 1.65    | 2.77     | 3.38     | 4.55     |
| 1.1/4" | 42.20  | 31.80  | 1.65    | 2.77     | 3.56     | 4.85     |
| 1.1/2" | 48.30  | 38.10  | 1.65    | 2.77     | 3.68     | 5.08     |
| 2"     | 60.30  | 50.80  | 1.65    | 2.77     | 3.91     | 5.54     |
| 2.1/2" | 73.00  | 63.50  | 2.11    | 3.05     | 4.16     | 7.01     |
| 3"     | 88.90  | 76.20  | 2.11    | 3.05     | 5.49     | 7.62     |
| 4"     | 114.30 | 101.60 | 2.11    | 3.05     | 6.02     | 8.56     |
| 5"     | 141.30 | 127.00 | 2.77    | 3.40     | 6.55     | 9.53     |
| 6"     | 168.30 | 152.40 | 2.77    | 3.40     | 7.11     | 10.97    |
| 8"     | 219.10 | 203.20 | 2.77    | 3.76     | 8.18     | 12.70    |
| 10"    | 273.10 | 254.00 | 3.40    | 4.19     | 9.27     | 12.70    |
| 12"    | 323.90 | 304.80 | 3.96    | 4.57     | 9.53     | 12.70    |
| 14"    | 355.60 | 355.60 | 3.96    | 4.78     |          |          |
| 16"    | 406.40 | 406.40 | 4.20    | 4.78     |          |          |
| 18"    | 457.20 | 457.20 | 4.20    | 4.78     |          |          |
| 20"    | 508.00 | 508.00 | 4.78    | 5.54     |          |          |
| 22"    | 558.80 | 558.80 | 4.78    | 6.35     |          |          |
| 24"    | 609.60 | 609.60 | 5.54    | 6.35     |          |          |

Dimensões em mm.

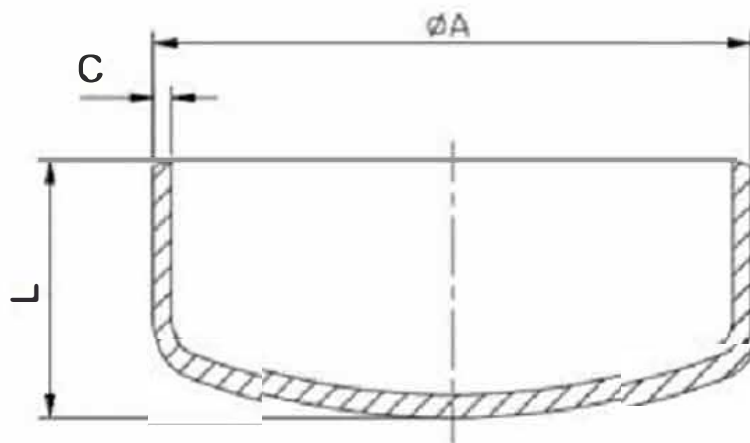
# Curva 45° Raio Longo ANSI B16.9



| DN     | A      | B      | C       |          |          |          |
|--------|--------|--------|---------|----------|----------|----------|
|        |        |        | SCH 5S. | SCH 10S. | SCH 40S. | SCH 80S. |
| 1/2"   | 21.30  | 15.70  | 1.65    | 2.11     | 2.77     | 3.73     |
| 3/4"   | 26.70  | 19.10  | 1.65    | 2.11     | 2.87     | 3.91     |
| 1"     | 33.40  | 22.40  | 1.65    | 2.77     | 3.38     | 4.55     |
| 1.1/4" | 42.20  | 25.40  | 1.65    | 2.77     | 3.56     | 4.85     |
| 1.1/2" | 48.30  | 28.40  | 1.65    | 2.77     | 3.68     | 5.08     |
| 2"     | 60.30  | 35.10  | 1.65    | 2.77     | 3.91     | 5.54     |
| 2.1/2" | 73.00  | 44.50  | 2.11    | 3.05     | 4.16     | 7.01     |
| 3"     | 88.90  | 50.80  | 2.11    | 3.05     | 5.49     | 7.62     |
| 4"     | 114.30 | 63.50  | 2.11    | 3.05     | 6.02     | 8.56     |
| 5"     | 141.30 | 79.20  | 2.77    | 3.40     | 6.55     | 9.53     |
| 6"     | 168.30 | 95.30  | 2.77    | 3.40     | 7.11     | 10.97    |
| 8"     | 219.10 | 127.00 | 2.77    | 3.76     | 8.18     | 12.70    |
| 10"    | 273.10 | 158.80 | 3.40    | 4.19     | 9.27     | 12.70    |
| 12"    | 323.90 | 190.05 | 3.96    | 4.57     | 9.53     | 12.70    |
| 14"    | 355.60 | 222.30 | 3.96    | 4.78     |          |          |
| 16"    | 406.40 | 254.00 | 4.20    | 4.78     |          |          |
| 18"    | 457.20 | 285.80 | 4.20    | 4.78     |          |          |
| 20"    | 508.00 | 317.50 | 4.78    | 5.54     |          |          |
| 22"    | 558.80 | 342.90 | 4.78    | 6.35     |          |          |
| 24"    | 609.60 | 381.00 | 5.54    | 6.35     |          |          |

Dimensões em mm.

# Caps ANSI B16.9



| DN     | A      | L      | C       |          |          |          |
|--------|--------|--------|---------|----------|----------|----------|
|        |        |        | SCH 5S. | SCH 10S. | SCH 40S. | SCH 80S. |
| 1/2"   | 21.30  | 25.40  | 1.65    | 2.11     | 2.77     | 3.73     |
| 3/4"   | 26.70  | 25.40  | 1.65    | 2.11     | 2.67     | 3.91     |
| 1"     | 33.40  | 36.10  | 1.65    | 2.77     | 3.38     | 4.55     |
| 1.1/4" | 42.20  | 36.10  | 1.65    | 2.77     | 3.56     | 4.65     |
| 1.1/2" | 46.30  | 38.10  | 1.65    | 2.77     | 3.68     | 5.08     |
| 2"     | 60.30  | 38.10  | 1.65    | 2.77     | 3.91     | 5.54     |
| 2.1/2" | 73.00  | 38.10  | 2.11    | 3.05     | 4.16     | 7.01     |
| 3"     | 88.90  | 50.80  | 2.11    | 3.05     | 5.49     | 7.62     |
| 4"     | 114.30 | 63.50  | 2.11    | 3.05     | 6.02     | 8.56     |
| 5"     | 141.30 | 76.20  | 2.77    | 3.40     | 6.55     | 9.53     |
| 6"     | 168.30 | 88.90  | 2.77    | 3.40     | 7.11     | 10.97    |
| 8"     | 219.10 | 101.60 | 2.77    | 3.76     | 8.18     | 12.70    |
| 10"    | 273.10 | 127.00 | 3.40    | 4.19     | 9.27     | 12.70    |
| 12"    | 323.90 | 152.40 | 3.96    | 4.57     | 9.53     | 12.70    |
| 14"    | 355.60 | 165.10 | 3.96    | 4.78     |          |          |
| 16"    | 406.40 | 177.80 | 4.20    | 4.78     |          |          |
| 18"    | 457.20 | 203.20 | 4.20    | 4.78     |          |          |
| 20"    | 508.00 | 228.60 | 4.78    | 5.54     |          |          |
| 22"    | 558.80 | 254.00 | 4.78    | 6.35     |          |          |
| 24"    | 609.60 | 266.70 | 5.54    | 6.35     |          |          |

Dimensões em mm.